

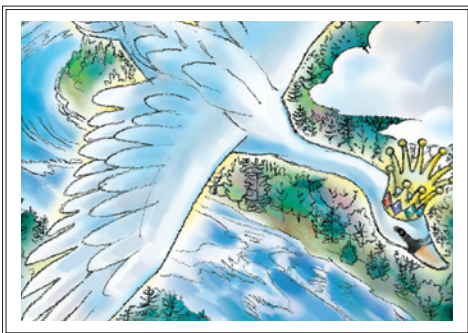


Biography of Rosemarie Gulla

Rosemarie Gulla, Founder and President of Royal Swan Enterprises, Inc. authored the fairy tale, *On the Wings of the Swan*. A lifelong educator, Rosemarie, has most recently served in the Department of Curriculum and Instruction with Durham Public Schools where she created and ran the Office of Parent Involvement and the Parent Advisory Council for the Title I program.

Rosemarie's work has been supported by grants from Z. Smith Reynolds, Cannon Foundation, Triangle Community Foundation, and various public education networks, Duke University Community Partnerships, Duke Community Care Grant, North Carolina Arts Council, Durham Arts Council, Babcock Foundation, and others.

Rosemarie's work with literature has been featured during Morning Edition and All Things Considered on WUNC-FM. Rosemarie holds a Special Education, B. A. from La Salle University and an M. Ed. in Psychology of Reading from Temple University.



Highlights of Recent Work

- Royal Swan Enterprises received a *Duke Community Care Grant* placing Rosemarie Gulla in five public and charter schools with 800 students and their teachers, culminating in "Poem O'Clock", a public performance of poetry by children for their families.
- Rosemarie was chosen by the *Durham Chapter of NCAE* (North Carolina Association of Educators) to headline Read Across America efforts.
- Perry Harrison Elementary PTA* supports Rosemarie's work in kindergarten and first grade classrooms. Teachers have used their work with Rosemarie towards securing their National Board Certification, citing W.I.N.G.S. as their effective, innovative and influential teaching approach. *North Chatham School PTA* is supporting Rosemarie's work in first grade classrooms.
- Rosemarie is working with the distinguished and award winning author, Ashley Bryan, to republish his first volumes of *Spirituals*.

Next steps?

Royal Swan Enterprises is ready to help.

Royal Swan Enterprises is ready to help. Contact Rosemarie Gulla to explore what program will best address your needs.

Rosemarie can be reached at
E-Mail: rgulla@nc.rr.com
Phone: (919) 274-0653



Royal Swan Enterprises

GIVE THEM W.I.N.G.S.[™]
SO THEY CAN FLY!

- What are schools, and popular culture, doing to inspire imaginations and motivate children to learn?
- What happens after the classroom lessons and activities are over?
- Do the children want to remember and work with the words and the ideas on their own?



Imagine if they did!

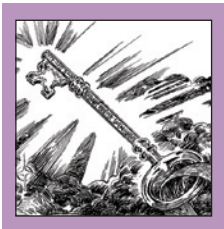


*Where does time go?
Childhood is fleeting.
The time for stories
is now.*



Who are we?

Royal Swan Enterprises is an alliance of educators who practice and teach others to use the W.I.N.G.S. (Words and Ideas Need Good Stories) approach to engage children in learning by taking advantage of the natural appeal of stories. Royal Swan Enterprises views teaching as an art. Royal Swan Enterprises views everyone as a teacher. Through our original contributions to the art of storytelling and poetry performance, including the use of props and ceremony, children are given irresistible opportunities to explore the world of words, stories and ideas. Emotional engagement opens the door to their success, as wonder, imagination, and creativity, serve as their golden keys.



“When they care, you’re halfway there.”

What can we do to help you?

Royal Swan Enterprises offers services designed for families, teachers, and volunteers. These services address professional development with a literacy focus. Family involvement services provide training in their successful participation in the literate lives of their children.

Teachers, assistants, volunteers, and families learn to once again enter the creative and imaginative world of children as they unleash elements and techniques that successfully and joyfully bring stories to life.

HERE IS A SAMPLING OF AREAS W. I. N. G. S.™ ADDRESSES:

- ✿ *the value of imagination in teaching*
- ✿ *the value of abstract thinking, creativity and internal focus*
- ✿ *how to connect literacy programming to inspiration and imagination*
- ✿ *how to work with core principles of teaching and learning and the building of knowledge using storytelling*
- ✿ *how to choose underlying ideas and concepts with universal appeal*
- ✿ *how to build background, create context and increase receptivity*
- ✿ *how to choose stories and build schema*
- ✿ *how to make stories, poetry, and word play effective teaching tools*
- ✿ *how to develop vocabulary*
- ✿ *how to prepare stories for presentation*
- ✿ *how to choose, create and use props that increase active engagement with the story*
- ✿ *how to recognize the words and phrases to highlight from stories and poems*
- ✿ *how to layer story upon story*
- ✿ *how to use the language of story*
- ✿ *how and why oral language prepares readers*
- ✿ *how to use the symbols and metaphors contained in stories*
- ✿ *how to use and value family stories*

Brief format

A one-hour session is ideal for parent-teacher meetings or back-to-school nights when motivating parents, teachers, and volunteers is a goal. Rosemarie incorporates the school and grade level focus into this presentation on behalf of literacy while she offers valuable and practical information.

Longer formats

There is flexibility in the content and exposure to W.I.N.G.S. allowing for residencies, multi-hour, half day, and full day formats. Programs can be designed to meet the needs of the group or organization.



Costs

The charge for a one hour session is \$200 plus travel expenses. The charges for the various longer formats (classroom visits and evening presentations) depend on the size of the group and the number of materials supplied to parents, teachers, and volunteers.



Royal Swan Enterprises

ROYAL SWAN ENTERPRISES,
W.I.N.G.S. and the swan design are
trademarks of Royal Swan Enterprises, Inc.